

Data Sheet

Customer: _____

Product: SMD Aluminum Electrolytic Capacitors – EKV Series

Size : 4x5.7mm ~ 10x10.5mm

Issued Date: 06-Nov.-2024

Edition: Ver.3

Record of change

Date	Ver.	Description	Page
15-May-2016	1		
19-Jun.-2024	2	Update size	1,2
06-Nov.-2024	3	Revised Dimension graphics	1

HITANO ENTERPRISE CORP.

7F-7, No. 3, Wu Chuan 1st Road, New Taipei Industrial
Park, New Taipei City, TAIWAN, R.O.C.

Tel: +886 2 2299 1331 (Rep.)

Fax: +886 2 2298 2466, 2298 2969

Prepared by	Checked by	Approved by	Accepted by (customer)
06-Nov.-2024	06-Nov.-2024	06-Nov.-2024	
<i>Randy Yu</i>	<i>Michelle Lin</i>	<i>Arthur Su</i>	

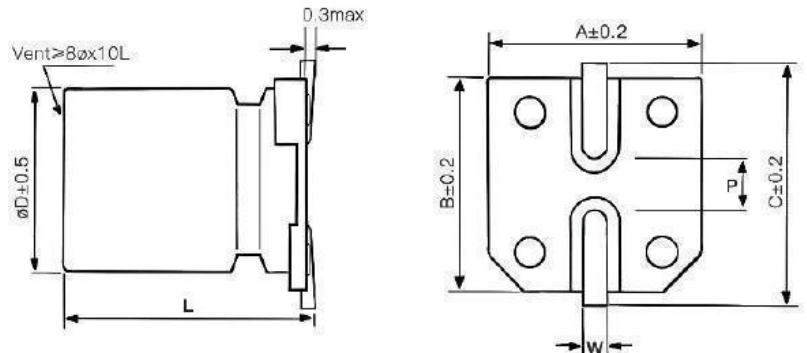
- SMD Low Leakage Type. Reflow Soldering is available.
- 85°C, 2000 hours assured
- Available For High Density Mounting

Characteristics

Voltage Range	6.3 to 50 VDC						
Capacitance Range	0.1 to 330uF						
Temperature Range	-40 to +85°C						
Capacitance Tolerance	+20% -20% (at 120Hz, 20°C)						
Leakage Current	I ≤ 0.002CV or 0.5uA, whichever is greater 2 minutes after Rated Voltage applied						
Dissipation Factor (tanδ) Max (at 120Hz, 20°C)	Rated Voltage (V)	6.3	10	16	25	35	50
	D.F. (tanδ) max	0.26	0.22	0.18	0.16	0.14	0.12
Stability at Low Temperature (at 120Hz, 20°C)	Rated Voltage (V)	6.3	10	16	25	35	50
	Z-25°C/Z 20°C	4	3	2	2	2	2
	Z-40°C/Z 20°C	8	6	4	4	3	3
Load Life	After the rated voltage has been applied for 2000 hours at 85°C	Capacitance change	Within ±25% of initial value				
		D.F. (tanδ)	200% or less of initial specified value				
		Leakage current	Less than initial specified value				
Shelf Life	After storage for 1000 hours at 85°C, with no voltage applied and being stabilized at +20°C, Capacitor shall meet the limit specified in load life. Pre-treatment of DC working voltage applied for 30 minutes shall be conducted before measurement.						

Diagram of dimensions

SIZE	Dφ	L	A	B	C	W	P
A	4	5.7±0.3	4.3	4.3	5.1	0.5~0.8	1.0
B	5	5.7±0.3	5.3	5.3	6.1	0.5~0.8	1.3
C	6.3	5.7±0.3	6.6	6.6	7.3	0.5~0.8	2.2
C8	6.3	7.7±0.3	6.6	6.6	7.3	0.5~0.8	2.2
D	8	6.5±0.5	8.3	8.3	9.2	0.7~1.2	3.2



Multiplier for Ripple Current vs Frequency

CAP(uF)\Freq(Hz)	60(50)	120	500	1K	≥ 10K
0.1 ≤ CAP ≤ 100	0.8	1.0	1.20	1.30	1.50
100 < CAP	0.8	1.0	1.10	1.15	1.20

Case size & Maximum Ripple Current (mA rms 85°C 120Hz)

Cap. ^{WV} uF	6.3		10		16		25		35		50	
	Size	RC	Size	RC	Size	RC	Size	RC	Size	RC	Size	RC
0.1											A	1
0.22											A	2
0.33											A	2.8
0.47											A	4
1.0											A	8.4
2.2											A	13
3.3											A	17
4.7									A	18	C	20
10			A	23	A	26	A/B	27/32	B	34	C	44
22			A	33	B	37	B	42	C	46	C8/D	48/52
33	A	37	B	41	C	49	C	52	C8/D	58/62	C8/D	66/71
47	A	45	C	52	C	58	C8/D	65/70	C8/D	75/80		
100	B	70	C8/D	75/80	C8/D	85/92	C8/D	102/110				
220	C8/D	102/110	C8/D	125/135								
330	C8/D	155/170										

Part Numbering System

EKV □ □ □ **M** □ □ **R** □
 Series Capacitance Tolerance Rated Voltage Package Case Size